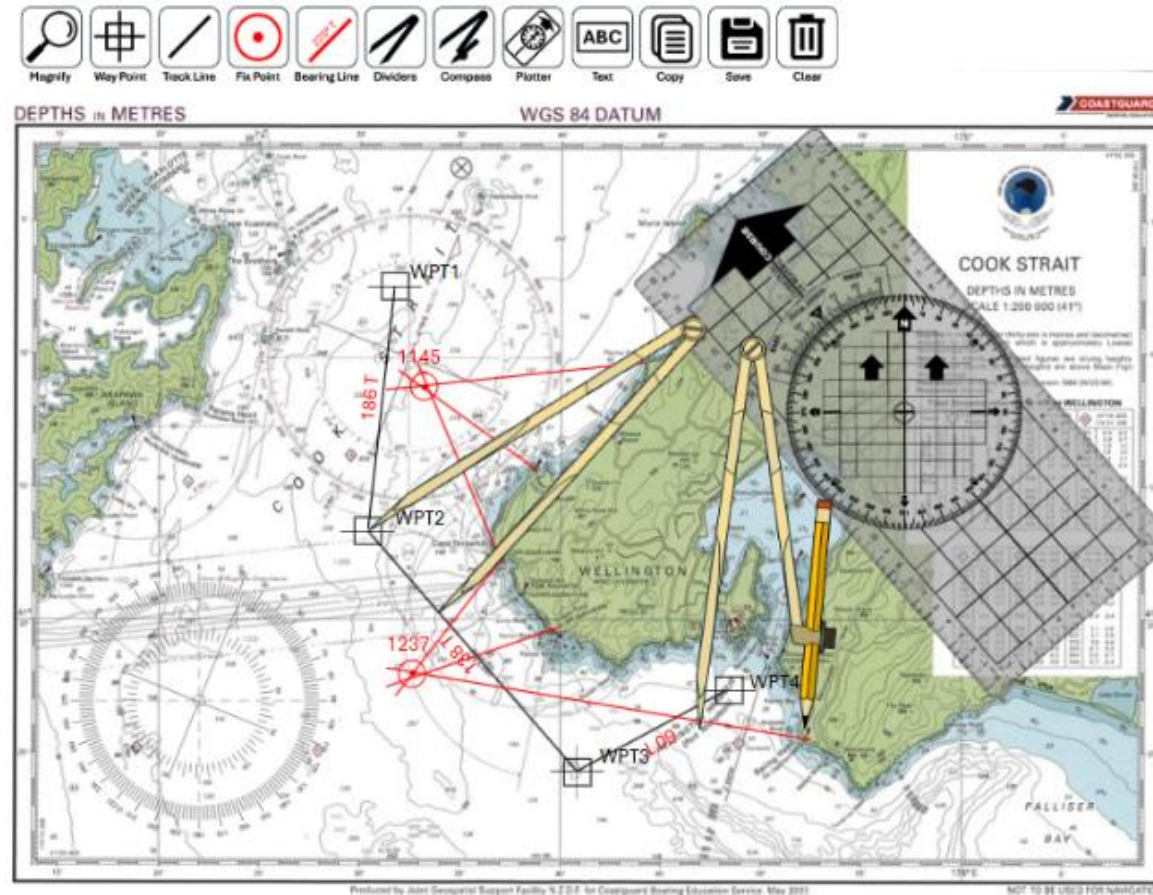


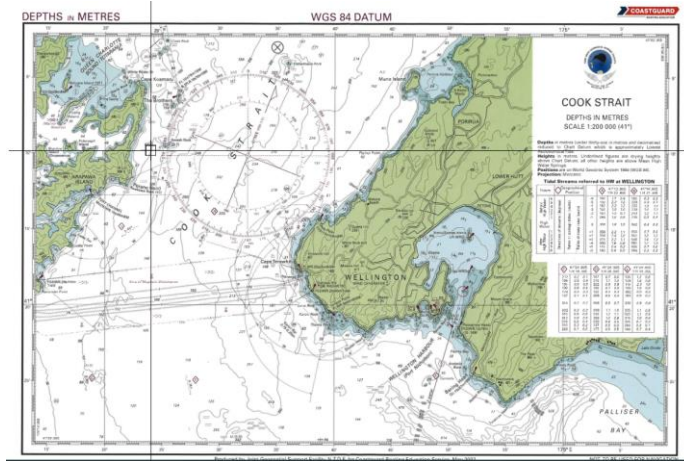
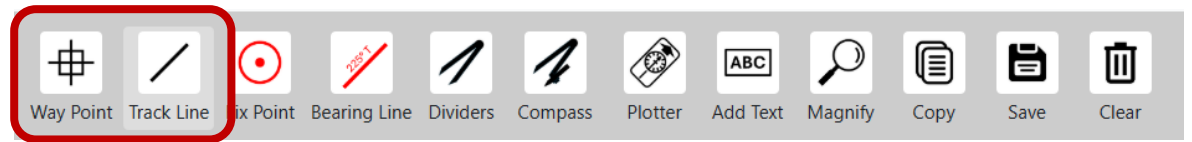
# Navigation Simulator Project 2026

## Current state

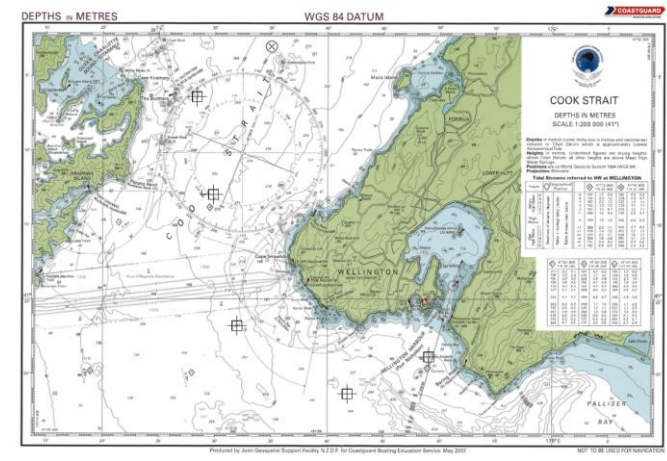


Project Lead and Graphic Design: Malcom Hay  
Coding and Interaction Implementation: Joshua Carter

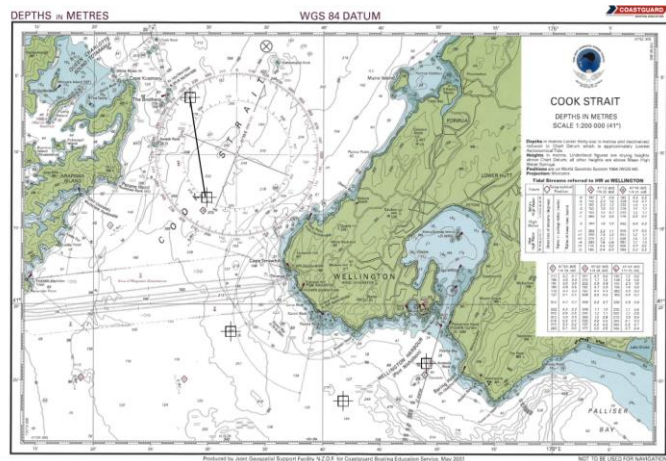
# Waypoints and Track Lines



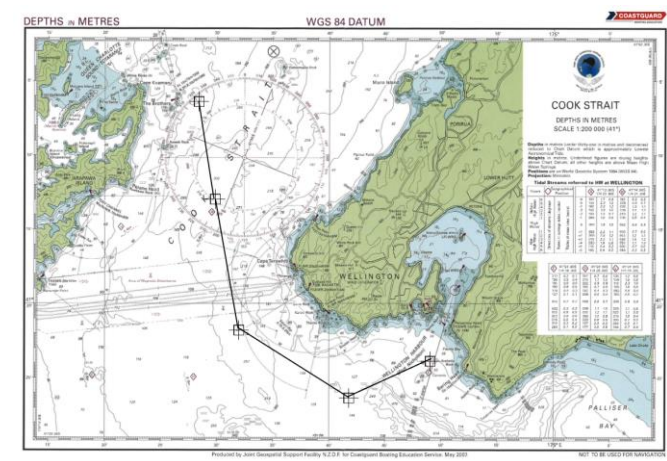
Waypoints can be placed while reading Lat Long coordinates



Placing Waypoints marks the chart with standard chart notation



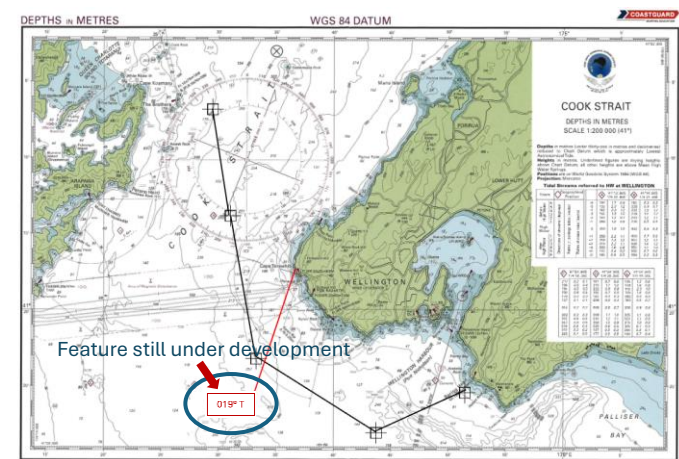
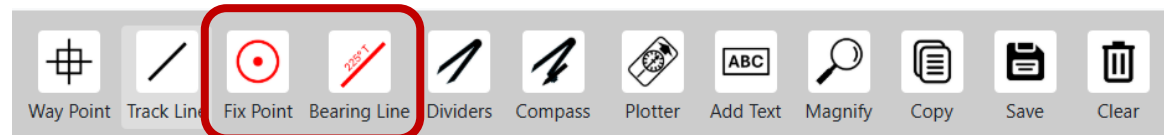
Track lines can be placed between waypoints



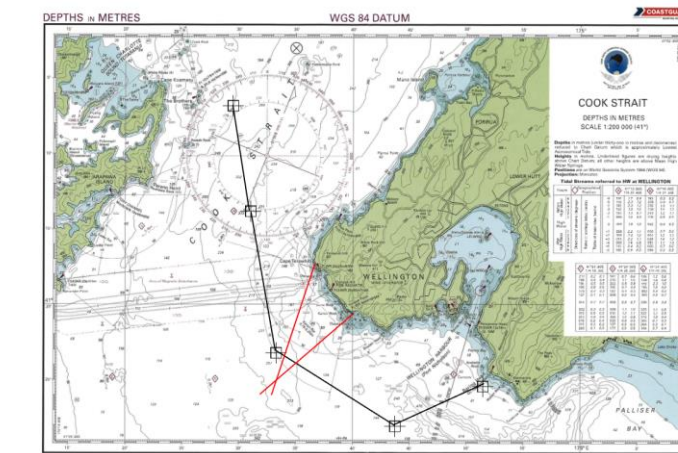
Finished Track Line with Waypoints

# Fix Points and Bearing Lines

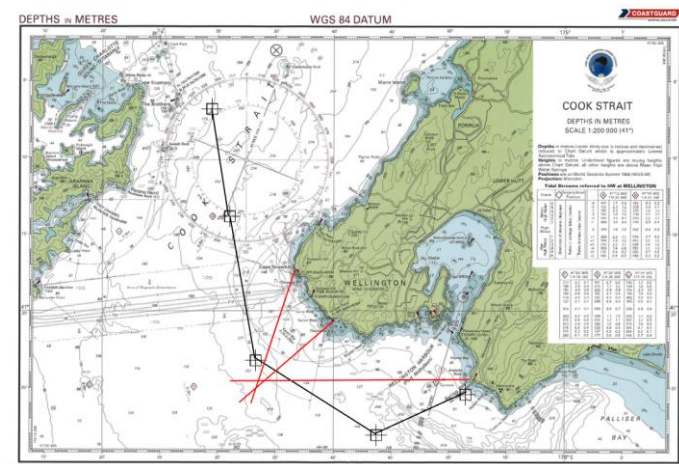
Still under development – Bearing reading to be added while drawing bearing line



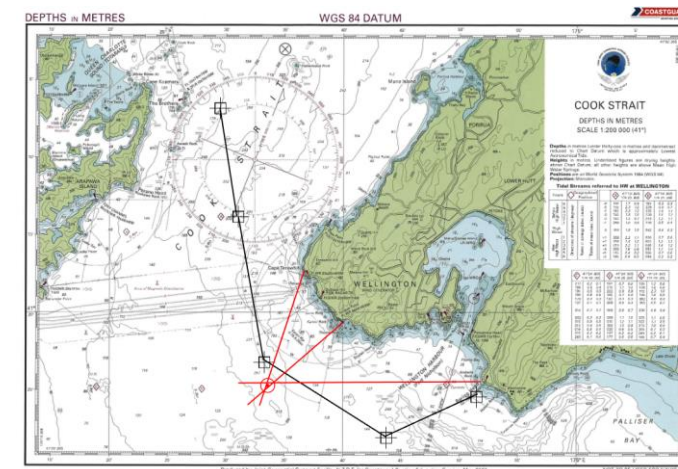
Plotting a bearing from a fixed point



Second bearing from a fixed point

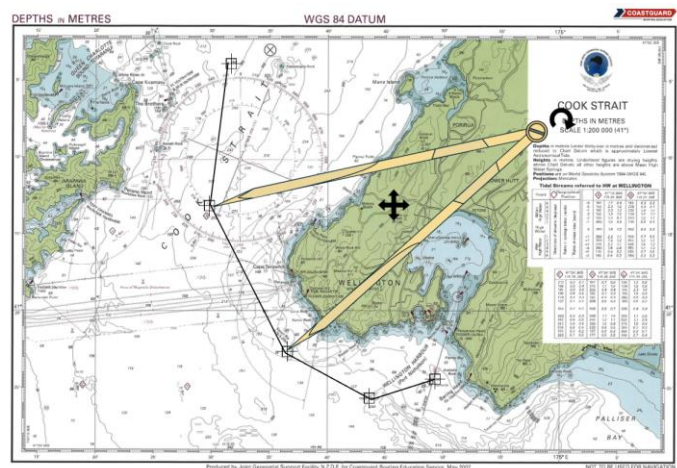
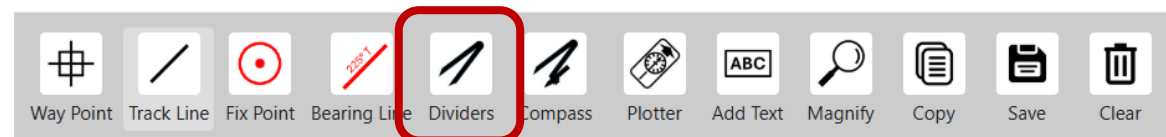


Third bearing from a fixed point

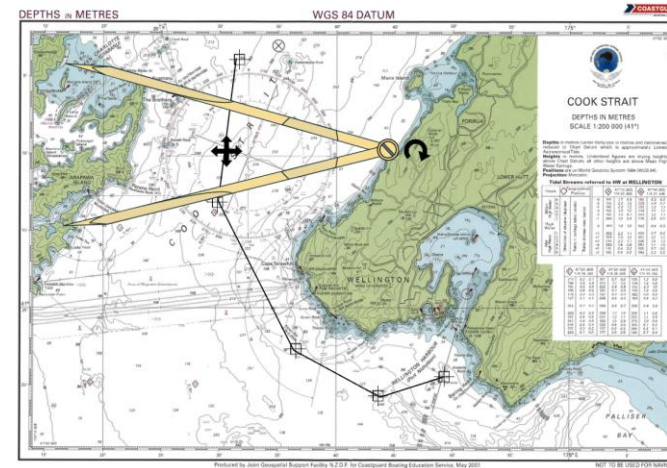


Fixed Point

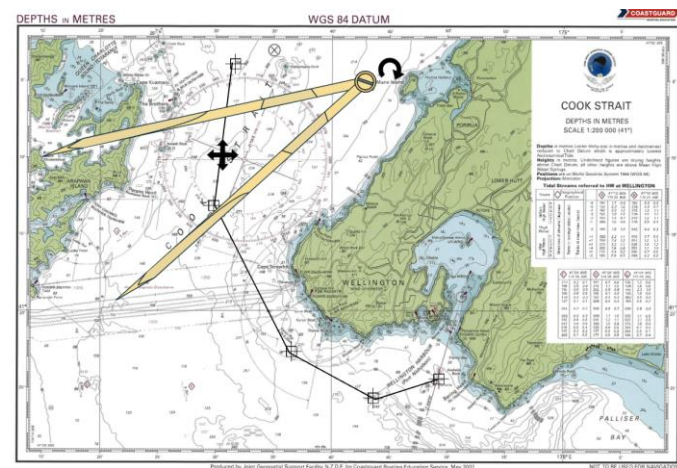
# Dividers



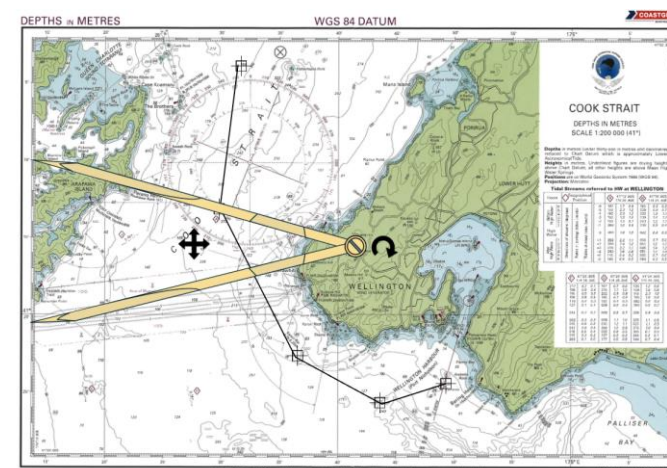
Select two points (in this example, waypoints)



Rotate the dividers to align with the edge of the chart

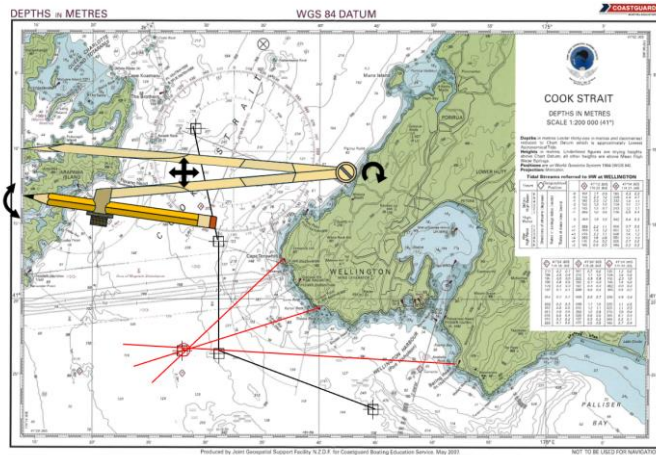


Shift the dividers to the edge of the chart

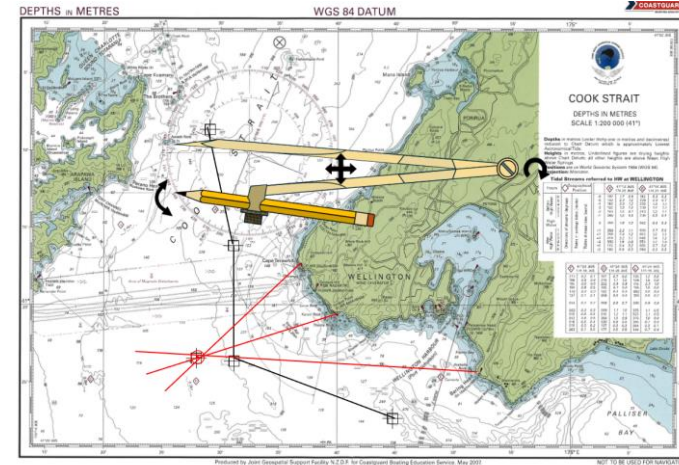


Measure the distance from the longitude

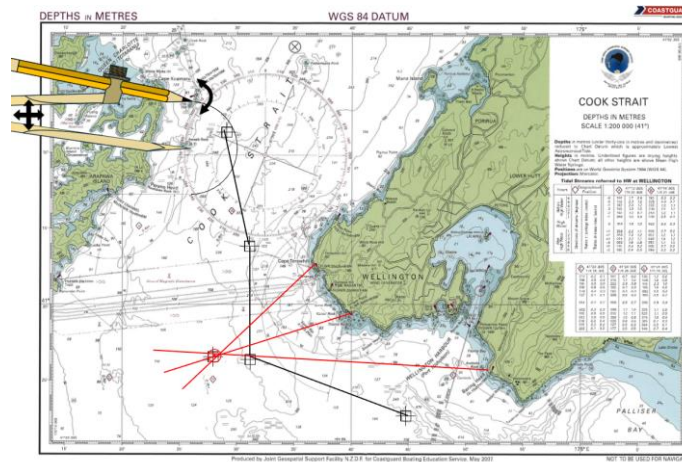
# Compass



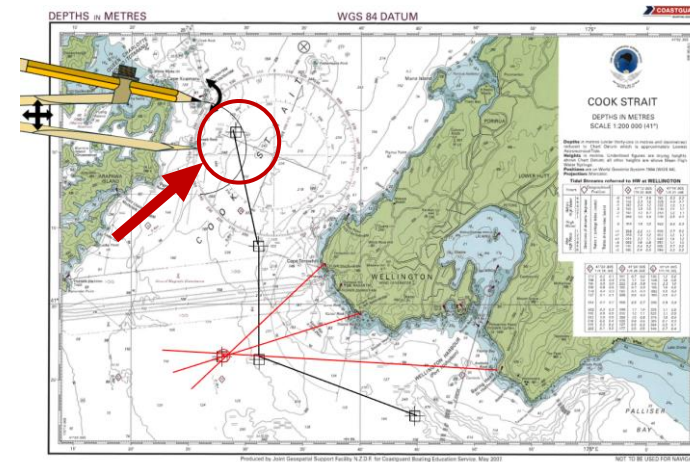
Select two points on longitude to set distance



Set point on the hazard to avoid

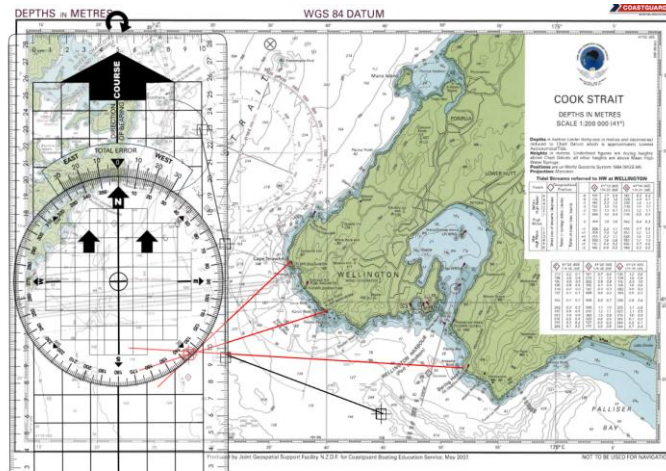


Draw Arc

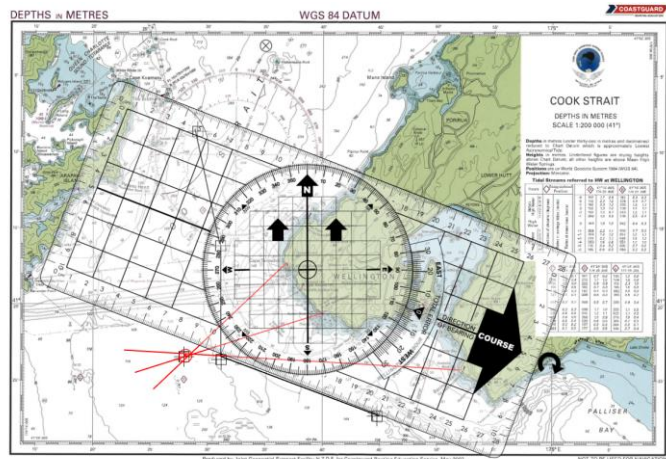


Waypoint and route pass through the hazard area

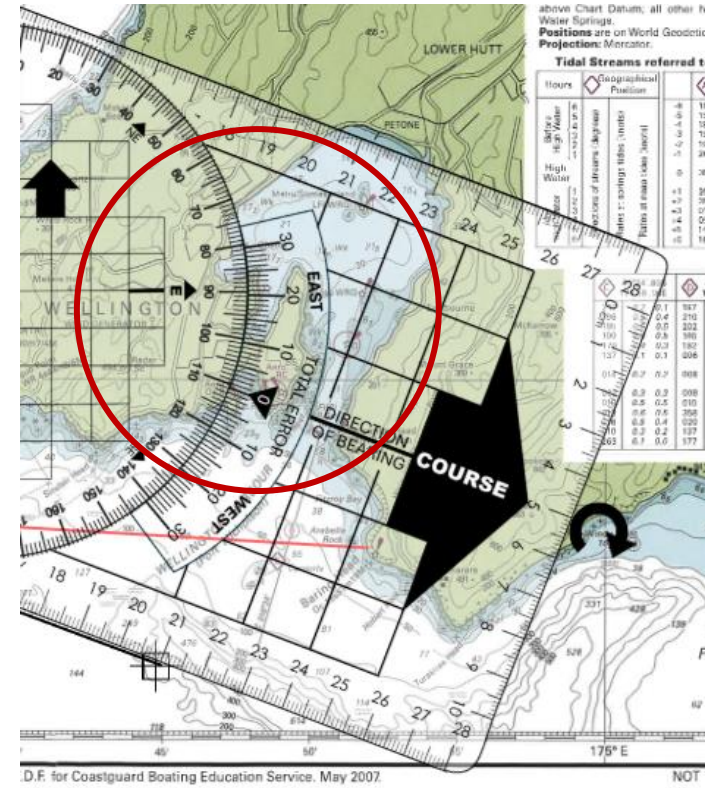
# Chart Plotter



Select The chart plotter

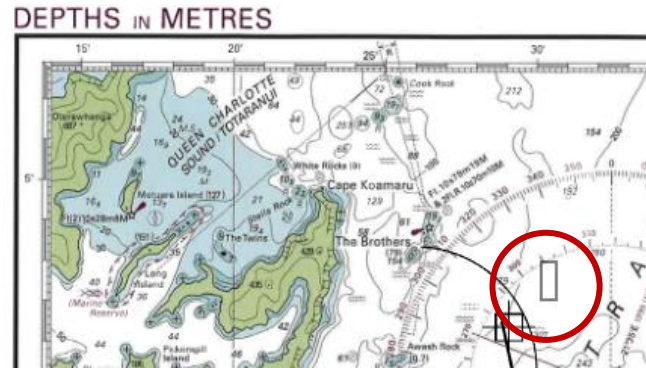
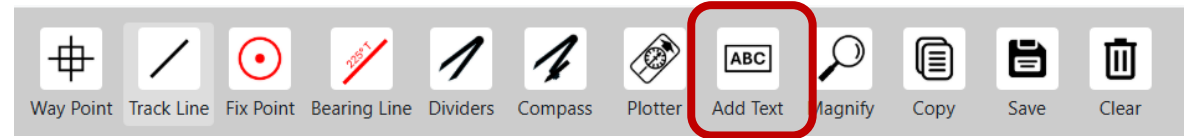


Align with path

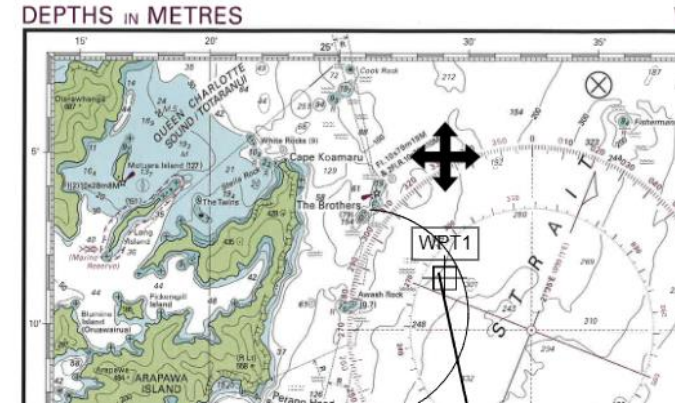


Read True course and/or magnetic variation

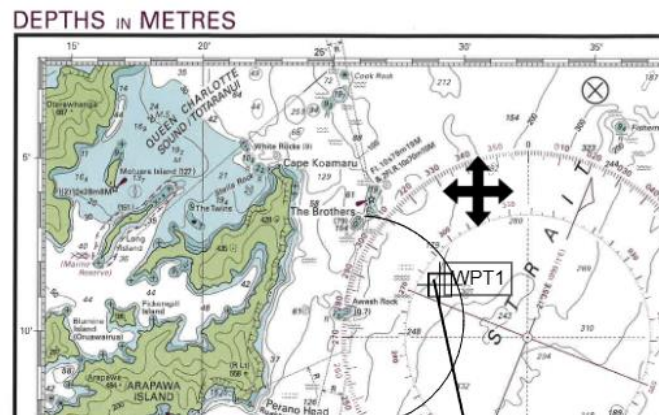
# Adding Text



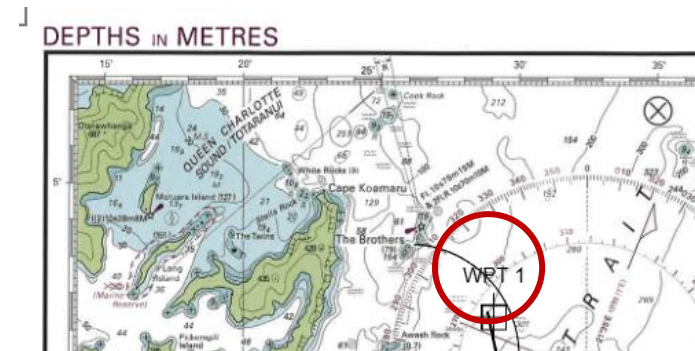
Select Add Text and set starting point



After typing reposition the text



After typing reposition the text

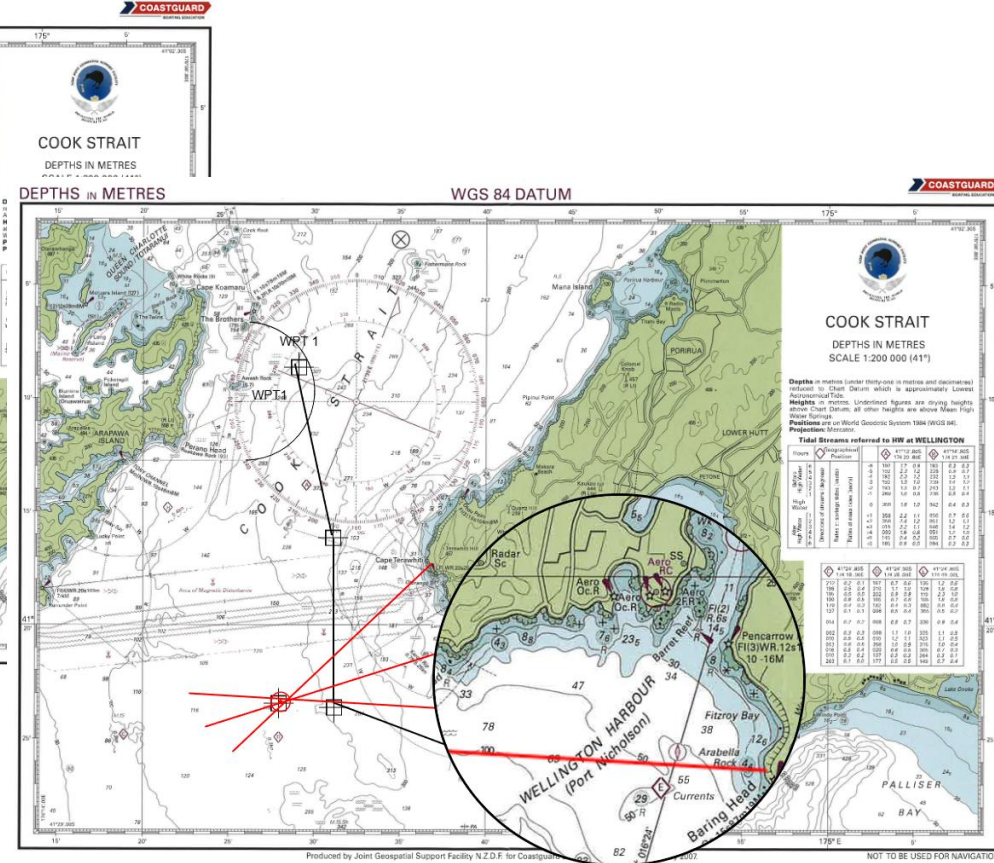
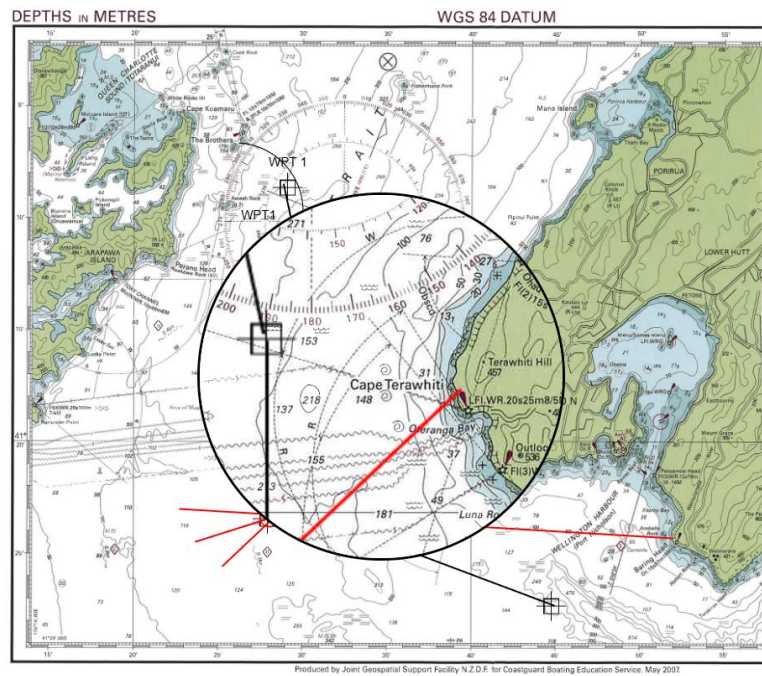


Leave and add more text or exit

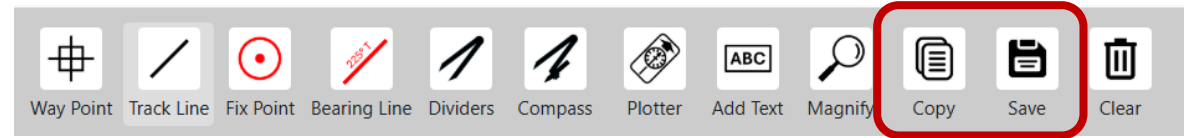
# Magnifying Function



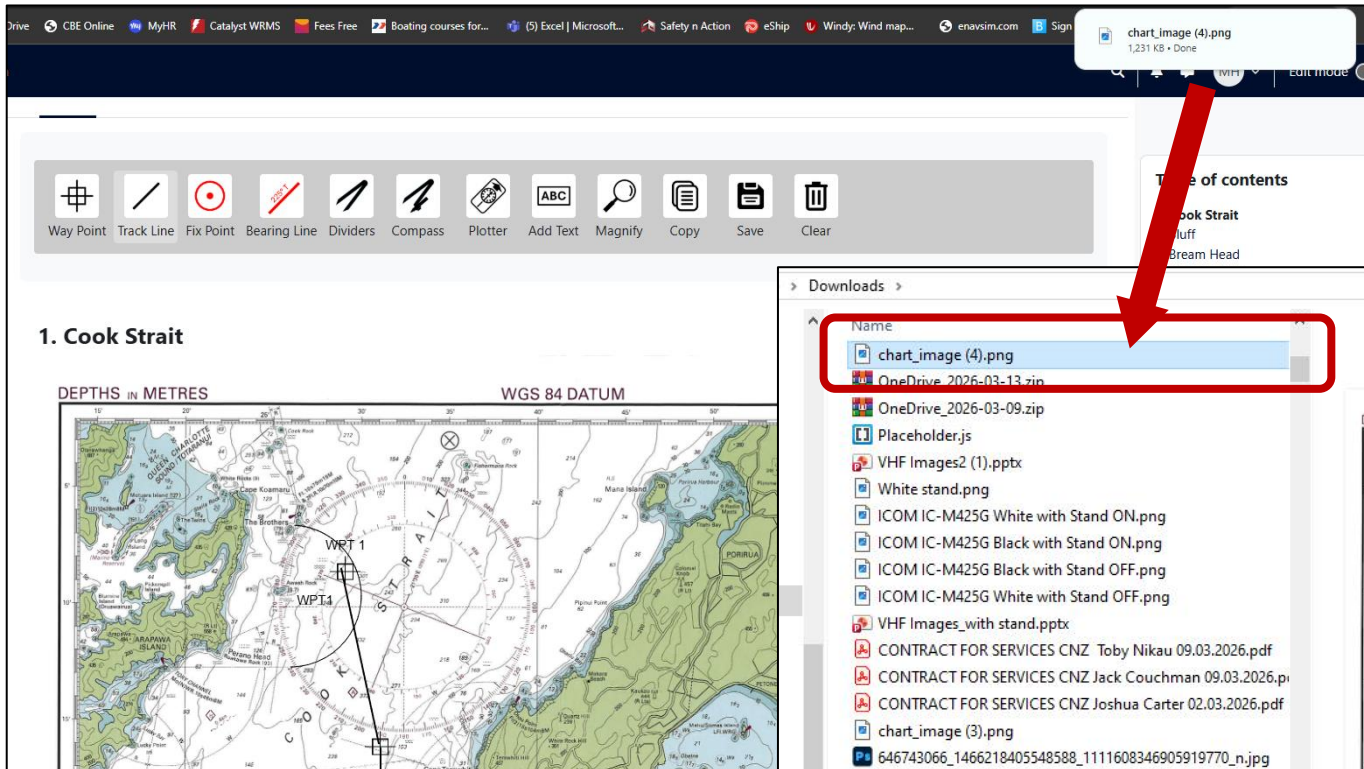
Magnifies the region within the circle to simplify reading large scale maps (follows mouse movement)



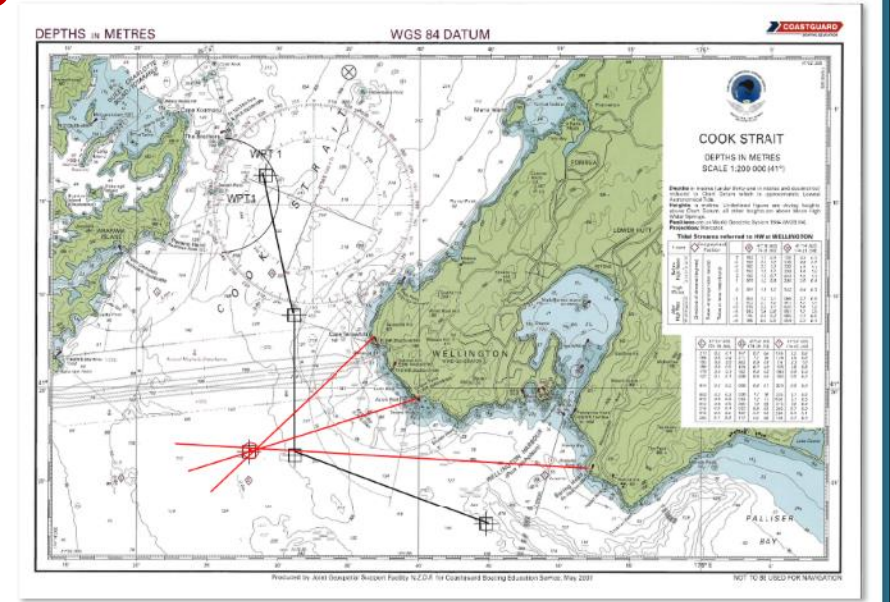
# Copy and Save



Select 'Copy' to paste into a document or 'Save' to download the notated chart to hard drive.



The file can be uploaded to an assessment.



# Clear

Way Point Track Line Fix Point Bearing Line Dividers Compass Plotter Add Text Magnify Copy Save **Clear**

Select 'Clear' to reset the chart to start again.

